

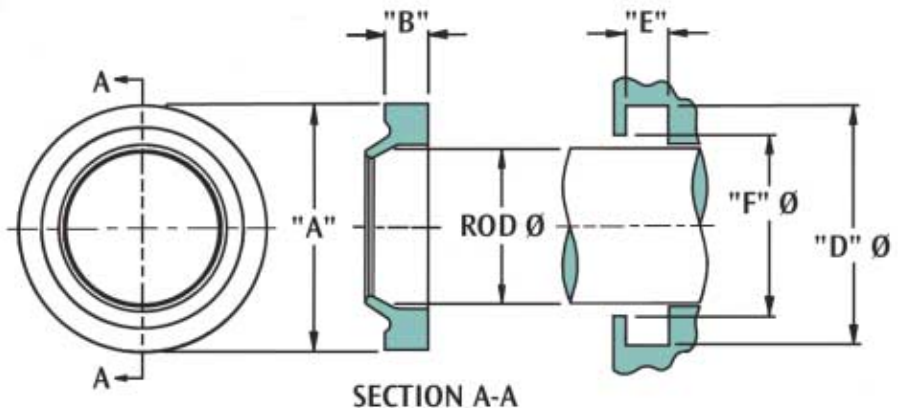
**RIBBED
URETHANE SCRAPER**
*Breakthrough in
Scraper Technology*

This scraper uses evenly spaced axial ribs to provide these important benefits:

- Minimizes static side leakage by exerting a powerful energizing force on the scraper's OD.
- Eliminates static side leakage caused by scraper rocking in its gland; the ribs provide fore and aft support.
- Eliminates scraper blow out potential by relieving pressure.
- Achieves excellent cylinder performance at economical prices when teamed with Greene Tweed's patented Superflex Seal.

Material

The Ribbed Scraper is manufactured of Greene, Tweed's exceptional 320 urethane that is compounded to provide low compression set and high tear resistance, modulus and abrasion resistance. Typical properties of 320 Urethane include: 92 Shore A hardness, 41.3 MPa tensile strength, 11.0 MPa modulus at 100%, and 475% ultimate elongation.



Cavity dimensions conform to ANSI/893.35

RIBBED URETHANE SCRAPER

PART NUMBERING SYSTEM - 4550R RIBBED URETHANE SCRAPER - INCH

4 5 5 0 R X X X X X - 3 2 0

Base Series Rod Diameter in inches Material

PART NUMBERING SYSTEM - 4540R RIBBED URETHANE SCRAPER - METRIC

4 5 4 0 R X X X X Y - 3 2 0

Base Series Rod Diameter in mm Material
Cross-section code*

*C=4mm cx, D=5mm cx, E=6mm cx

DIMENSIONAL INFORMATION IN INCHES

Greene, Tweed P/N	Cavity Dimensions		
	Rod	D	E
4550R01000-320	1.000	1.372	.187
4550R01062-320	1.063	1.435	.187
4550R01250-320	1.250	1.622	.187
4550R01500-320	1.500	1.872	.187
4550R01750-320	1.750	2.122	.187
4550R02000-320	2.000	2.497	.429
4550R02125-320	2.125	2.622	.429
4550R02250-320	2.250	2.747	.429
4550R02375-320	2.375	2.872	.429
4550R02500-320	2.500	2.997	.429
4550R02650-320	2.625	3.122	.429
4550R02687-320	2.688	3.185	.429
4550R02750-320	2.750	3.247	.429
4550R03000-320	3.000	3.497	.249
4550R03125-320	3.125	3.622	.249
4550R03250-320	3.250	3.747	.249
4550R03375-320	3.375	3.872	.249
4550R03500-320	3.500	3.997	.249
4550R03620-320	3.625	4.122	.249
4550R03750-320	3.750	4.247	.249
4550R03875-320	3.875	4.372	.249
4550R04000-320	4.000	4.497	.249
4550R04125-320	4.125	4.622	.249
4550R04250-320	4.250	4.747	.249
4550R04375-320	4.375	4.872	.249
4550R04500-320	4.500	5.247	.374
4550R04625-320	4.625	5.372	.374
4550R04750-320	4.750	5.497	.374
4550R04875-320	4.875	5.622	.374
4550R05000-320	5.000	5.747	.374
4550R05250-320	5.250	5.997	.374
4550R05375-320	5.375	6.122	.374
4550R05500-320	5.500	6.247	.374
4550R05750-320	5.750	6.497	.374
4550R06000-320	6.000	6.747	.374
4550R06500-320	6.500	7.247	.374
4550R07000-320	7.000	7.747	.374
4550R07500-320	7.500	8.247	.374
4550R08000-320	8.000	8.747	.374
4550R08500-320	8.500	9.247	.374
4550R09000-320	9.000	9.747	.374
4550R09500-320	9.500	10.247	.374
4550R10000-320	10.000	10.997	.499
4550R11000-320	11.000	11.997	.499
4550R12000-320	12.000	12.997	.499

DIMENSIONAL INFORMATION IN MM

Greene, Tweed P/N	Cavity Dimensions		
	Rod	D	E
4540R0200C-320	20	28.6	5.3
4540R0220C-320	22	30.6	5.3
4540R0250C-320	25	33.6	5.3
4540R0300C-320	30	38.6	5.3
4540R0320C-320	32	40.6	5.3
4540R0350C-320	35	43.6	5.3
4540R0360C-320	36	44.6	5.3
4540R0400C-320	40	48.6	5.3
4540R0450C-320	45	53.6	5.3
4540R0500C-320	50	58.6	5.3
4540R0550C-320	55	63.6	5.3
4540R0560C-320	56	64.6	5.3
4540R0600C-320	60	68.6	5.3
4540R0630C-320	63	71.6	5.3
4540R0650C-320	65	73.6	5.3
4540R0700C-320	70	78.6	5.3
4540R0750C-320	75	83.6	5.3
4540R0800C-320	80	88.6	5.3
4540R0850C-320	85	93.6	5.3
4540R0900C-320	90	98.6	5.3
4540R0950C-320	95	103.6	5.3
4540R1000C-320	100	108.6	5.3
4540R1050C-320	105	113.6	5.3
4540R1100C-320	110	118.6	5.3
4540R1150C-320	115	123.6	5.3

Other sizes are available.

CORPORATE HEADQUARTERS

2075 Detwiler Road · Kulpville, PA 19443 USA
Tel: +1 (215) 256-9521 · Fax: +1 (215) 256-0189 · Website: www.gtweed.com

INDUSTRIAL GROUP

2374 North Penn Road · Hatfield, PA 19440 USA
Tel: +1 (215) 996-4700 · Fax: +1 (215) 996-4730

ADVANTEC DIVISION

7101 Patterson Drive · Garden Grove, CA 92645
Tel: 714-893-0903 · Fax: 714-373-1763

GREENE, TWEED & CO., LTD.

Ruddington Fields, Ruddington, Nottingham · NG11 6JS · England
Tel: +44 (0) 115 9315 777 · Fax: +44 (0) 115 9315 888

GREENE, TWEED & CO., BENELUX B.V.

Canadaweg 2a · 4661 PZ Halsteren · Netherlands
Tel: +31 (0) 164 612 123 · Fax: +31 (0) 164 610 030

GREENE, TWEED & CO., FRANCE, S.A.

19 rue des Beaux Soleils · BP-409 Osny · 95527 Cergy-Pontoise Cedex · France
Tel: +33 (1) 30 73 54 44 · Fax: +33 (1) 30 73 45 75

GREENE, TWEED & CO., GmbH

Nordring 22 · 65719 Hofheim am Taunus, Germany
Tel: +49 (6192) 92 99 50 · Fax: +49 (6192) 90 03 16

GREENE, TWEED & CO., JAPAN

10F Tokuei Building · 33-7, Shiba 5-Chome · Minato-ku, Tokyo 108-0014 · Japan
Tel: 3 3454 1050 · Fax: 3 3454 1040
5F Shin-Osaka · Ikushima Building, 1-3 · Miyahara 5-Chome · Yodogawa-ku, Osaka 532 · Japan
Tel: 6 397 8565 · Fax: 6 397 8575

GREENE, TWEED & CO., PTE., LTD.

21 Serangoon North Avenue 5 · #04-01/03, Ban Teck Han Building · Singapore 554864
Tel: +65 6 481 2808 · Fax: +65 6 481 7338

www.gtweed.com

Superflex™ is a trademark of Greene, Tweed & Co.

Greene, Tweed & Co. is an Equal Opportunity Employer

Statements and recommendations in this publication are based on our experience and knowledge of typical applications for this product and shall not constitute a guarantee or warranty of performance nor a modification or alteration of our standard product warranty which shall be applicable to such products.

© 2002 Greene, Tweed & Co.
April 2002

